

③ Measures for areas with limited judicial services

For areas where it is difficult to receive legal services due to a lack of lawyers or judicial scriveners, **Houterasu** will provide legal services at an appropriate cost through staff lawyers who work for **Houterasu**.

④ Victim Support

For crime victims and their families, **Houterasu** provides information on available victim aid systems, such as procedures for participation in criminal proceedings or recovery of damages for victims and other related persons. Information is also provided on victim support organizations and lawyers with expertise in the field of victim support. The telephone number for crime victims is 0570-079714.

⑤ Court-Appointed Defense Counsel Services

If, owing to financial difficulties, you are unable to pay for a lawyer in a criminal trial, the court (the state) can appoint a lawyer for you. This is the system of court-appointed defense counsel. In the past, court-appointed defense counsel could only be appointed after a defendant is indicted, but since October 2006 in some serious cases, court-appointed defense counsel can be appointed for a suspect undergoing investigation before indictment.

Houterasu swiftly and reliably enlists candidates for court-appointed defense counsel, provides assistance in arranging court-appointed defense counsel right from the investigation to the trial, and provides support for implementation of the saiban-in (lay judge) system.

※The legal experts comprised of lawyers and judicial scriveners perform their duties independently, and do not receive orders or instructions from **Houterasu**.

Hokkaido

| | |
|-----------|--------------|
| Sapporo | 0503383-5555 |
| Hakodate | 0503383-5560 |
| Asahikawa | 0503383-5566 |
| Kushiro | 0503383-5567 |

Tohoku

| | |
|-----------|--------------|
| Miyagi | 0503383-5535 |
| Fukushima | 0503383-5540 |
| Yamagata | 0503383-5544 |
| Iwate | 0503383-5546 |
| Akita | 0503383-5550 |
| Aomori | 0503383-5552 |

Kanto

| | |
|-----------|--------------|
| Tokyo | 0503383-5300 |
| Kanagawa | 0503383-5360 |
| Saitama | 0503383-5375 |
| Chiba | 0503383-5381 |
| Ibaraki | 0503383-5390 |
| Tochigi | 0503383-5395 |
| Gunma | 0503383-5399 |
| Shizuoka | 0503383-5400 |
| Yamanashi | 0503383-5411 |
| Nagano | 0503383-5415 |
| Niigata | 0503383-5420 |

Chubu

| | |
|----------|--------------|
| Aichi | 0503383-5460 |
| Mie | 0503383-5470 |
| Gifu | 0503383-5471 |
| Fukui | 0503383-5475 |
| Ishikawa | 0503383-5477 |
| Toyama | 0503383-5480 |

Kinki

| | |
|----------|--------------|
| Osaka | 0503383-5425 |
| Kyoto | 0503383-5433 |
| Hyogo | 0503383-5440 |
| Nara | 0503383-5450 |
| Shiga | 0503383-5454 |
| Wakayama | 0503383-5457 |

Chugoku

| | |
|-----------|--------------|
| Hiroshima | 0503383-5485 |
| Yamaguchi | 0503383-5490 |
| Okayama | 0503383-5491 |
| Tottori | 0503383-5495 |
| Shimane | 0503383-5500 |

Shikoku

| | |
|-----------|--------------|
| Kagawa | 0503383-5570 |
| Tokushima | 0503383-5575 |
| Kochi | 0503383-5577 |
| Ehime | 0503383-5580 |

Kyushu

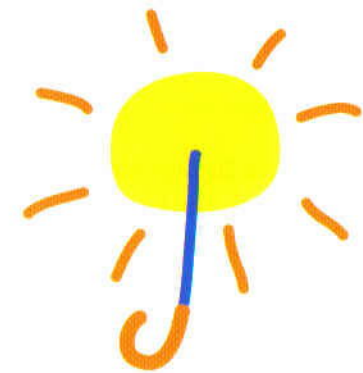
| | |
|-----------|--------------|
| Fukuoka | 0503383-5501 |
| Saga | 0503383-5510 |
| Nagasaki | 0503383-5515 |
| Oita | 0503383-5520 |
| Kumamoto | 0503383-5522 |
| Kagoshima | 0503383-5525 |
| Miyazaki | 0503383-5530 |
| Okinawa | 0503383-5533 |

Our offices are no bilingual staff present at these offices, these services are only provided in Japanese. Foreign applicants who would like to avail themselves of these services will need to bring their own translator.

Open on Monday-Friday: 9:00 a.m. - 5:00 p.m.
Closed on Saturdays, Sundays and national holidays.

Japan Legal Support Center Headquarters

Ichigaya Building 6F, 4-2-6 Kudankita,
Chiyoda-ku, Tokyo 102-0073
Tel: 0503383-5333
URL: <http://www.houterasu.or.jp>



法テラス

Houterasu
has opened 50 offices
across the country.

CALL CENTER

☎ 0570-078374

※From overseas: 81-3-6745-5600
(81 is Japan's country calling code)

Call center hours are
weekdays 9:00 a.m. - 9:00 p.m.
Saturday 9:00 a.m. - 5:00 p.m.

English-speaking bilingual
operators are present during these hours.

Japan Legal Support Center